



Ramblings
November 2016

-
- Presidential Thoughts
 - Buildings & Safety
 - Lots Available
 - Lot Signs
 - Clings, Stickers & Flags
 - From the VP
 - Trees with History
 - Address Changes
 - Thank you Everyone!!
 - Fish, Lakes & Trees
 - Roads & Volunteers
 - Beautify LVR Day
 - Early LVR Memories
 - Board Information
 - Columbarium
 - By-Laws/Rules & Regs
 - Uncle Dan's Nature Corner
-

PRESIDENTIAL THOUGHTS

I am astounded how quickly summer has turned to fall as days flow by so very quickly. Hunter members populate Ranch with forays to the wilder wild, (no weapons or dogs are allowed in the Ranch House.) I would take note if you are hiking to wear "Hunter Orange" as you are afield...it just makes good sense like closing the gate and driving 20, except where you should not be driving 20 at blind corners. They are the same corners common to Ranch for 55 years! Road work will be addressed as we are able. Please remember that we've lived 7 years of drought....dust devils do not wash out the roads and we have had big rains that do. Note that the grader is operated by people that have regular jobs and volunteer for the work. We are by nature a wilderness area, not one served by Boulevards.

As I write this in October, we have a waiting list for lot membership for the first time since the conflagration that wiped out so very many landmarks at Ranch. This is a really big deal folks and a watershed event in Ranch's recovery. As this is published in November, all lots are spoken for with none remaining. That too is a watershed event!!

Ranch Board met with listing agents and thru e-mails with Wildhorn's owner after a motion passed on August 6, 2016 at the Annual Meeting asking the Board to do a feasibility study on the purchase of Wildhorn. The asking price of \$950,000.00, plus work to be done to make the property useful, complicates matters. We looked at Dam engineering and controls needed to satisfy Denver Water Board mandates. Part of the land had been subdivided during the drought; those lots spirits are dampened now we have rains. Your board must determine if the project would constitute a significant benefit to our members and their families. The enormity and cost of the project was part of this discussion in detail as were the peculiarities of debt structure in our times. Regulations of multiple jurisdictions are now quite different than when the founders dreamt of Ranch and Retreat; this board has demands mandated that were never part of that first bright dream. In light of these and other issues, Ranch Board cannot recommend pursuit of Wildhorn Ranch property.

Just a reminder; no one is prohibited from expressing their opinions to Ranch members in whatever format they choose. Please understand that no one speaks for LVRanch Board except the properly elected Board members or their designated representative(s).

Our job is the same as yours....To Pray and To Serve.

Your Brother in Christ

BUILDINGS & SAFETY

Can you believe the amazing “second summer” we had this year? Seventy degree days through the end of October are truly a blessing. Congratulations to all of you who were able to spend a little time at LVR in the last couple months.

Buildings continue to spring up all over the ranch. We should host a “Parade of Homes” sometime and share ideas. Creativity abounds in the use of solar panels, composting commodes, Yurts, park models, water systems, heating systems and more. Please remember to submit your building plans for an easy approval before you build... if only so I can get some good ideas for my place ;)

We’ve been doing well on safety this year, and our “gate closed” policy has been very well observed. Please slow down for those blind corners (especially where the aspens have been growing) and keep safety in mind. In case you were wondering... the board is discouraging open water snowmobile racing again this winter.

Your Brother in Christ,
Shad

LOTS AVAILABLE

Currently we have no lots available

LOT SIGNS

Need a sign with your name on it for your lot? Go to www.lvranch.org and click on “Lot sign request form” at the bottom of the main page or contact Shirley Bauer at slbauer1030@gmail.com. We are making signs for all the new members.

CLINGS, STICKERS AND FLAGS

LVR window clings, ATV stickers and ATV flags are available. The board encourages all members to have a window cling (black and white) displayed in the lower drivers side windshield of their car and LVR stickers (yellow and black) on their ATV’s. These forms of ID let your fellow Ranch members and Retreat staff know that you belong on the property. COST: Clings and stickers are FREE. ATV flags \$10.00 donation (non-deductible). If you need any of these items, contact Shirley Bauer at slbauer1030@gmail.com or Alan Peterson at PetersonA@wedbush.com

FROM THE VP

Can you believe that summer is gone and the cold of Winter is approaching. Yes, I said approaching as of this writing, we have not had any snow at our house and it is late October!! What a great summer at LVRanch this year. Diana and I had the opportunity to spend a few weekends up at our mountain getaway this year and we came home refreshed and ready to face another week of work. I don’t know about anybody else but the time that we spend at LVRanch is so very precious to us and the many friends that we have among the membership who open their lots to us for BBQ and cold refreshments is one of the greatest parts of the weekends.

As we approach a new year, remember to continually be praying for LVRanch and that this wonderful place that we call our 2nd home will remain untouched by the trials and tribulations of life and that it will remain a pristine representation of God’s beauty that we all can share.

God’s richest blessing to all of you and your families,

John Harris
LVRanch Board Vice-President

TREES WITH HISTORY

History buffs might know that back when the buffalo roamed freely across the plains, most of Colorado and much of Utah was considered to be Ute Indian territory (that's how state of Utah got its name). We recently learned that the Ute Indians left us a legacy, of sorts.

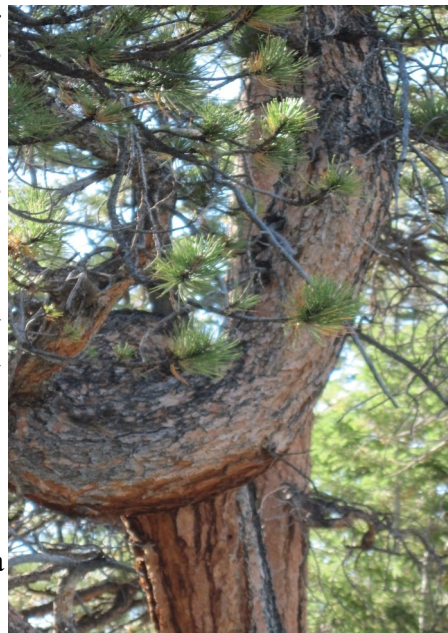
A large region surrounding Pikes Peak (including the Ranch area) has what historians refer to as 'culturally modified trees'. These are trees which were modified by the use of straps and other devices (from saplings) to achieve certain shapes and designs during growth. The tree modifications were presumably performed by the Ute Indians while they were living in this region about 200 + years ago. If you go on the internet and search 'Ute Indian trees' you can see pictures of what is here being discussed.

You will find tree names like 'spiritual tree,' 'trail marker tree,' 'prayer tree' and 'prophesy tree' used to distinguish them. It's important to understand that the historians don't really know whether the Ute Indians had any intended purpose for the tree modifications (other than for the sake of art). Very little in the way of any written record now exists regarding the Ute culture. Most so-called expert discussions about the culturally modified trees are largely speculation.

The purpose of this writing is to simply inform the Ranch membership about the existence of the culturally modified trees in our area. An oddly shaped tree is not necessarily an unhealthy tree. Should you discover a culturally modified tree on your lot, perhaps a few extra feet could be afforded it for placement of buildings and campfire rings. We need to be good stewards for the benefit of those coming after us, too.

At the same time, we hope not to open our gates to unwanted 'tree viewing' by the kinds of folks who might want to put us on some sort of a map, so your discretion is here requested if you find one. There are many protected culturally modified trees on surrounding public lands to accommodate those folks. That's all.

Your Brother in Christ,
Jim Simpson



ADDRESS CHANGES

Have you moved recently? If you have moved since August 2016, please contact the Ranch secretary, Dee Paulson, at dplakewood@comcast.net and she will make sure your information is updated.

THANK YOU EVERYONE!!

Annual Meeting

Thank you to the following people for helping set-up and clean-up for lunch & the meeting, and those who helped count ballots:

Lance & Karen Buckingham (Lot 98)
Fran Dieter (Lot 89)
Ed Geisler (Lot 96)
Dwight Koops (Lot 38)
Kim Malloreay (Lot 90)

Paula Snowden (Lot 43)
Richard & Ilse Stratton (Lot 121)
Kathy Wacker (Lot 104)
Cindy Woodward (Lot 82)

Dee Paulson
LVRanch Board Secretary

FISH, LAKES AND TREES

It was a blessing to have Bear Lake full of Rocky Mountain rain water for the second summer in a row. This year we added about 100 Rainbows in the 2-3 pound range. I hope you were fortunate enough to catch at least one of them. I think that having the possibility of catching a big one makes fishing more exciting. Another new addition was the re-introduction of Brown Trout. I finally caught my first Brown in early October. I think they are more beautiful than the Rainbow.

Have you noticed any changes at Bear and Deer Lakes? We now have new boards in both docks. Also eight foot long steps have been installed at Bear Lake which makes it a much safer access to the dock. During the LV Ranch Beautify Day we were able to cut down weeds around the fishing areas and add wood chips to those areas for easier fishing access. Plans are to add a picnic table or two in that area to making fishing there a more fun event. Deer Lake has some small steps to make access to the dock easier. Next summer we will add the eight foot long steps.

Our annual Chipalooza event was October 8. We had eight great volunteers and we were able to chip all of the neatly stacked piles of trees and branches. A huge cheer for Richard and Ilza Stratton, Lee Cross, Jim Simpson, Clare Skov, Dennis Carpenter, Alan Peterson, and Dave Romberg.

Your brother in Christ,
Dave Romberg

ROADS AND VOLUNTEERS

As most of you know, all of the Ranch's roads are privately maintained. In the past, most of the road maintenance has been performed by volunteers. Many thanks are here given to Steve Johnson, Todd Kelm and Clare Skov for their ongoing efforts to maintain our main entry way, Ellison Road, and keep it in good drivable shape, year round.

At the annual meeting in August, many members expressed concern about the condition of several of the out-laying Ranch roads. We are now seeking bids or job estimates from outside folks experienced in performing the type of road work needed (including proper grading and establishing appropriate drain/runoff ditches). It is hoped that the needed road work will start before much snow starts to fall on the Ranch this year, but due to the prior commitments of such contractors, the start of that work is more likely to occur after the snow melts in the coming spring.

Once the roads are in good shape, volunteers will be needed to periodically drag the roads with the use of steel drags that have kindly been provided by members for our use. The current road drags are best pulled behind a 4x4 vehicle, although I was able to have much success using my 2x4 pickup with several concrete blocks in the bed for better traction. If there is enough volunteer interest, the acquisition of small road drag capable of being pulled behind an ATV or an RZR would be considered.

If you have an interest in helping out by occasionally dragging some of the out-lying roads, please let me know. If we have enough folks willing to perform some road dragging 'every once in a while', maintaining the roads will not be burdensome for anyone. The Ranch is also willing to reimburse you for your reasonable, on-the-job fuel cost. It's a way to contribute a little, while you're still having fun at the Ranch.

Your brother in Christ.
Jim Simpson

BEAUTIFY LVR DAY

What a great success & a beautiful day to boot. We had 24 volunteers show up. We got a lot accomplished: Mulch path on the north side of Bear Lake; Ranch House area weeded, baby trees transplanted, retaining wall reset, dirt steps leveled, aspen trimmed & thinned; Grasses around the Ranch House parking lot cut for fire safety; Ranch House main room & kitchen cleaned inside & out; Columbarium area weeded, rock border laid, new mulch laid. The next time you see these people, please thank them for all their hard work:

James Arbogast (Lot 35)
Dick & Norie Aufdemberge (Lot 10)
Chuck & Shirley Bauer (Lot 35)
Brenda Beins (Lot 117)
Bob Blackett & Debbie Harrison (Lot 1)
Jackie Brookshire (Lot 55)
John & Eileen Johnson (Lot 100)
Loren & Ben Larrabee (Lot 69)
Dee Paulson (Lot 99)

Alan Peterson (Lot 16)
Chris Ramsel (Lot 48)
Dave Romberg (Lot 5)
Jim Simpson (Lot 112)
Clare & Twila Skov (Lot 26)
Marie Skov (Lot 123)
Norv & Carolyn Skov (Lot 32)
Ellen Weidner (Lot 34)

Thank you!!Dee Paulson



EARLY LVR MEMORIES

By Harry Zimbrick

TENTS

We had no tents for campers. A week before the camp, we went to Colorado Surplus in Denver to get equipment. I asked if they had any tents, the agent said, "No." Just then a man came in and said a truck had just arrived with a shipment of military items including 5 new, unused command post tents. (God does provide.)

WORREL ERICKSON

Worrel, a member of Immanuel, worked for Charlie Adam's Excavating Co.. Charlie was also a member of Immanuel. A week after the first camp ended, Worrel, using Adam's front loader, bulldozed the El-lison Road to the your camp site.

DAMS

The two dams were built to impound water for the Wildhorn cattle that grazed on LVR.

WALTER ENGE

Walter Enge was pastor of Immanuel Lutheran Church in Colorado Springs. He was also president of the Colorado District. His membership gave LVR credibility with Lutherans in Colorado Springs and around the state. Immanuel gave him an A-Frame cabin as a gift for his service.

HARRY HOTH

Harry Hoth, a one time mayor of Colorado Springs and owner of KRDO radio and television station bought a lot. He freely gave of his knowledge of the business world to the Board and helped us through difficult financial times.

CAMP OFFICE

The first office at LVR was a desk in an overseas wooden packing crate. It was located by the present Ranch House site.

LOT SURVEYS

Erv Stressman, Elder Thaete, Don Dieter, Hal Glaser, and myself spent many, many weekends staking out lot boundaries in 1964 and 1965, roads were also part of the surveying. A major confrontation arose between the Board and the surveyors over the placement of the roads. The question was, should all roads be laid out in straight lines (as in Stagecoach and Bobcat) or follow the contours of the hills? You can drive the roads on LVR to determine the outcome.

WHAT A BLESSING

God has richly blessed all who have enjoyed the youth camps and the ranch for generations. We pray for his continued blessing and guidance as we hand over the leadership, caretaking, and vision for LVR to the many generations to come. Thank you, dear Lord.

Lutheran Valley Ranch Board of Directors Info

Alan Peterson – President
Rock of Ages Lutheran, Colo. Springs
alan.peterson@wedbush.com (email)

John Harris – Vice-President & Ramblings
Newsletter/Website
Family of Christ Lutheran, Monument, CO
Jdh930@gmail.com (email)

Jim Simpson—Roads & Equipment
St. John's Lutheran, Denver, CO
Simpson.james.86@gmail.com (email)

Dee Paulson – Secretary
Ascension Lutheran, Littleton, CO
dplakewood@comcast.net (email)

Shirley Bauer – Membership & Treasurer
Redeemer Lutheran Colorado Springs, CO
slbauer1030@gmail.com (email)

Vacant - Membership/Buttons & Signs
The Board will be considering several people
for this vacant position at the November Board
meeting.

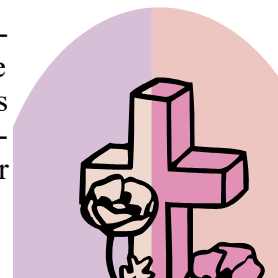
Shad Jeseritz—Buildings / Safety
Family of Christ Lutheran, Monument,
jeseritz@comcast.net (email)

Clare Skov – Ranch House
Faith Lutheran, Woodland Park, CO
pastorc_skov@hotmail.com (email)

Dave Romberg - Lakes/Fish/Trees
Peace With Christ Lutheran, Aurora, CO.
keepkidsinsports@msn.com (email)

COLUMBARIUM

We are pleased to announce that the columbarium has sold out, with ½ a niche remaining (space for 1 set of cremains). A second columbarium has been ordered & will be placed before next summer. The cost of a niche (which holds two sets of cremains) is \$1000. Half a niche (for one set of cremains) can be reserved for \$500. If you are interested in reserving a niche, the reservation forms are available on the Ranch website or from Dee Paulson at (303)716-3518 or dplakewood@comcast.net.



BY-LAWS/RULES & REGULATIONS

If you would like a copy of the Corporate By-Laws or the Rules & Regulations, please contact Dee Paulson at dplakewood@comcast.net or (303)716-3518. The By-Laws and Regulations are also available on our website at: www.lvranch.org

UNCLE DAN'S NATURE CORNER

by Bob Blackett

Fall Color at LVR

We've just finished one of the best fall leaf seasons in my memory. September has always been our favorite month, cooler and quieter with beautiful leaf colors. Before our retirement when we lived out-of-state, we would try to schedule a week at LVR during the last half of September, mainly for the fall colors.

The timing and duration is a little hard to predict. But this year we've had a warm extended fall. The aspens across Lutheran Valley are also larger each year since the 2002 Hayman Fire, and put on a better show. Hackett Mountain particularly this year had spectacular broad bands of yellow and orange against the green.

First the 'art' of fall color. Writers have been inspired by it, e.g. Henry David Thoreau. Artists have tried to capture it. Our cabin features paintings of changing leaves, one by Jewel Blackett, my aunt now in her '90s living in Paonia, another of aspens more recently by our neighbor Margaret Zimbrick. Debbie has already decorated our front porch with pumpkins, corn shocks, and has wound (fake) yellow and orange leaves around the posts. (This is written in early October – the fake spiders and ghosts will wait until later this month....). Landscaping trees such as maples or honey locusts are often planted for fall color. Lots of people travel to see fall color, especially to New England, Southern Canada, Northern/Western Europe. Colorado publishes newspaper guides each year listing the best aspen viewing road trips. Several weeks ago I attended a church men's fly fishing retreat, and our best advice all weekend by the Arkansas River guide was to take time each day to just sit and view the surroundings, relax and meditate.

Now the 'science' of fall color. Leaves of deciduous plants change color in the fall because the green color of chlorophyll, necessary for photosynthesis, fades and is sometimes re-absorbed into stems, trunks, roots. Other pigments, yellow/orange carotenoids and xanthophylls, red/purple anthocyanins, were always present in the leaves but were formerly covered up by the green.

LVR aspens are particularly interesting because of variations. Some change earlier in September while others wait until the end of the month. Since they are often a clone, in effect all aspen trees in a spot being one root-linked individual (the aspen has been called the world's largest living organism!), a group of trees in an area will all change at once. Some also show orange color, and the swaths of orange amidst the yellow are wonderful. We have some red color, particularly the small Rocky Mountain Maple or the wild roses.

So I hope you appreciate the autumn leaves, whether to compost as we do, or as a refuge for critters during the cold months, or to shuffle your feet in, or to rake into a pile to jump into, or to just look at and marvel in the beauty of the place.

